

Agricultura Tropica and Subtropica

Instructions for Authors

1) GENERAL INFORMATION

Agricultura Tropica et Subtropica (ATS) is an international peer-reviewed scientific journal published under the authorisation of Mendel University in Brno, Czech Republic (MENDELU) and managed by the Faculty of Regional Development and International Studies. ATS is dedicated to publishing cutting-edge research in tropical and subtropical agriculture. The journal provides a platform for scientists worldwide to share their findings on plant and animal production, animal health and welfare, sustainable agriculture, agriculture technology, land and water protection, forestry, agricultural economics, regional development in tropical and subtropical areas, and related topics. Published studies contribute to the development of innovative solutions for the challenges faced by agriculture in tropical and subtropical regions. The journal publishes original research articles and comprehensive review articles from the disciplines concerned. The manuscript must be both original (not published previously elsewhere) and formally correct. Papers are published in English. The authors are fully responsible for the originality of the paper, its subject and formal correctness. As of 2021, the journal is published in open-access online-only; the articles are published continuously.

Publisher

ATS is an international peer-reviewed scientific journal published under the authorisation of MENDELU and managed by the Faculty of Regional Development and International Studies.

Mendel University in Brno, Zemědělská 1665/1, 613 00 Brno, Czech Republic

Licence terms

The articles are licensed under the Creative Commons Attribution Non-Commercial 4.0 International (CC BY-NC 4.0).

Open access and charges

All published articles are open access, and there is no publication fee, ensuring the wide dissemination of scientific knowledge. The journal provides immediate open access to its content on the principle that making research freely available to the public supports a greater global exchange of knowledge.

2) CONTACT INFORMATION

Editor-in-Chief: Ivo ZDRÁHAL, Mendel University in Brno, Brno, Czech Republic, e-mail: ivo.zdrahal@mendelu.cz

Chairperson of the editorial board: Ivo PAVLIK, Mendel University in Brno, Brno, Czech Republic. e-mail: ivo.pavlik@mendelu.cz

3) JOURNAL POLICIES

Single-blinded peer review process - the journal uses a single-blinded peer review, which means that the reviewers remain anonymous to the authors throughout the review process, while the reviewers can see the authors' identities. Peer-review process steps are:

1. Manuscript submission – the corresponding author submits the manuscript to the journal via the online editorial system (<http://www.editorialmanager.com/ATS>).

2. Editorial office assessment – the manuscript's composition and arrangement are checked against the Instructions for Authors. The manuscript is checked for plagiarism.

3. Evaluation by the Editor-in-Chief (EIC) – EIC checks that the manuscript is appropriate for the journal and is sufficiently original and interesting. If not, the manuscript may be rejected without being reviewed. EIC consults with Editorial Board Members if necessary.

4. EIC may assign a Co-editor who will handle the peer review.

5. Invitation to Reviewers – at least two reviewers are assigned by the Editor in Chief or the Co-editor to a manuscript. Once responses are received, further invitations are issued, if necessary, until at least two acceptances of the article review are obtained.

6. Response to invitations – potential reviewers consider the invitation based on their own expertise, conflicts of interest and availability. They then accept or decline. If possible, when declining, they might also suggest alternative reviewers.

7. Review is conducted – the reviewer sets time aside to read the manuscript several times. The first read is used to form an initial impression of the work. If major problems are found at this stage, the reviewer may feel comfortable rejecting the manuscript without further work. Otherwise, he will read the manuscript several more times, taking notes to build a detailed point-by-point review. The completed review is then submitted to the journal, providing an Overall Reviewer Recommendation (ranging from excellent to unacceptable), an Overall Manuscript Rating on a scale of 1 to 100, and detailed Comments on the manuscript.

8. The EIC or assigned Co-editor considers the returned reviews before making an overall decision. If the reviews differ widely, an additional reviewer could be invited to get an extra opinion before making a decision. The EIC decides on the publication of papers, considering peer reviews, scientific importance, and recommendations of the Editorial Board members.

9. The decision is communicated. The Executive Editor sends a decision e-mail to the corresponding author, including any relevant comments.

10. Next steps. If accepted, the manuscript is sent to production. If the article is rejected or sent back for either major or minor revision, the handling editor should include constructive comments from the reviewers to help the author improve the paper. If the paper was sent back to authors for revision, the reviewers should expect to receive a new version, unless they have opted out of further participation. However, where only minor changes were requested, this follow-up review might be done by the handling editor.

Pre-submission language editing

This journal places a premium on high-quality scientific writing and clear presentation. Because of this, the manuscript must be grammatically and linguistically corrected throughout, and authors are required to use British English spelling conventions (such as aetiology, caecum, faecal, haematology, and utilise). To avoid acceptance problems, authors who are not native English speakers are strongly advised to have their work translated by a professional who understands the specific subject matter or to have it assessed by an English editing service before submission. Please note that manuscripts written in poor-quality English may be rejected immediately without entering the peer-review stage.

4) SUBMISSION OF MANUSCRIPTS

Submit the manuscript electronically to the editorial system from the web page (<http://www.editorialmanager.com/ATS>). The manuscript should be submitted in the following separate files:

Manuscript file (.doc/.docx) including title, author's name(s) including ORCID, author's affiliation, abstract, keywords, content/text of the article (tables and figures in the text), acknowledgements, conflict of interest, ethical compliance, references.

When submitting the article in the editorial manager, the author must also submit these three declarations:

- 1) Declaration of Authorship (<https://1url.cz/feRkKu>)
- 2) Open Access Licence (<https://1url.cz/2eRkK1>)
- 3) ATS Submission Form (<https://1url.cz/OeRkKJ>).

In case of multiple authorship, it is understood that the manuscript has been read and approved by all authors.

5) MANUSCRIPT FILE LAYOUT

Manuscript body. The original paper should not exceed 20,000 characters with spaces – including tables, references, and figure captions. The review article recommended extent is up to 80 000 characters (with spaces).

Formatting. MS Word editor should be used for creating the text (Times New Roman, 12, lines 1.5; 2.5 cm margins on each edge of the page). Write the text in non-formatted style. Pages and lines of the manuscript must be numbered in the left-hand margin.

Language. The manuscript must be grammatically and linguistically correct (British English). The authors who are not native English speakers are strongly advised to get their manuscript checked by a native English-speaking professional before submission to avoid acceptance problems.

Tables must be formatted in MS Word (will not be accepted as an image file). Each item must be placed into a separate cell. Tables are to be numbered with Arabic numerals in the order in

which they are included in the text, and have a brief, self-explanatory title. Explanatory footnotes to tables should be indicated by superscript letters (or asterisks for significance values). Abbreviations or symbols used in the tables must be explained either in the table title or as a footnote. For explaining abbreviations or symbols used in tables, it is not possible to refer to the main text.

Figures should be restricted to material essential for documentation and understanding of the text and accompanied by a concise, descriptive legend. Centred captions, parallel to axes, are used to indicate the measured attributes and their dimensions (in brackets). All illustrative material must be of publication quality. High-contrast photographs and autotypes must be submitted in .jpg/.tiff format at high resolution (min. 300 dpi). All photos, graphs, illustrations and diagrams must be referred to as a figure and numbered (Figure 1) continually according to the order in which they are included in the text, using Arabic numerals. Abbreviations or symbols used in the figures must be explained either in the figure title or as a footnote. Duplicated documentation of data in both Tables and Figures is not acceptable.

Figures and Tables. Duplicated documentation of data in both Tables and Figures is not acceptable. All figures and tables should be inserted at the end of the manuscript, and the main text should refer to the correct placement of the figures and tables. The tables and figures must be numbered following their order of appearance (Arabic numerals: Figure 1, Figure 2, ...). All figures and tables must be mentioned in the text of the manuscript.

Accessibility Requirements: Alternative Text (Alt Text) for Figures. To ensure all published research is fully accessible to the global scientific community, including researchers with visual impairments who rely on assistive technologies, all submitted manuscripts must include alternative text (alt text) for every non-text element. Authors are required to provide a concise, meaningful alt text description for all figures, charts, graphs, and diagrams at the initial submission stage. Alt text should not simply repeat the figure caption. While a caption provides context and analysis, alt text must describe the actual visual appearance and the key data trends shown in the image. For example, rather than stating "Figure 1: Revenue growth," the alt text should describe the visual elements, such as "A bar chart showing a steady upward trend in revenue from 2020 to 2025, with the highest peak in the final year." For complex diagrams, provide a brief summary of the workflow or structures depicted. Please note that logos, standard brand graphics, and purely decorative formatting elements do not require alt text. If the submission process requires manual tagging, these items should be explicitly marked as "decorative" or "artefacts" so that screen-reading software knows to bypass them. To comply with this policy, please include an "Alt Text" section directly beneath each figure caption within your main manuscript file, or use the dedicated text fields provided during the online submission process. Manuscripts submitted without complete alt text descriptions will be returned to the authors for correction before entering the peer-review process.

Source of data. The sources of the data used in the article should be clearly stated in the text of the article (properly cited) and mentioned below the tables and figures. The sources should be available in the reference list (properly cited, see the References manual below).

Equations should be numbered using Arabic numerals (1). Each equation should be followed by a legend (where: y – refers to; x – indicates ...), explaining all variables and acronyms used, which were not explained previously. The equations should be further editable (use MathType, MS Word equations editor).

Nomenclature. Species names should be given in italics and in full (e.g. *Bos taurus*, *Sus scrofa*, *Equus caballus*, *Canis familiaris*) on their first appearance in the abstract, the main text, or in a table. The symbols used for genetic objects (e.g. gene, locus, allele, genotype, haplotype) should be italicised (e.g. *RYR1*, *ALB*, *SW1057*, *ETH5001*). The corresponding protein symbols should be in plain text (RYR1, ALB). Symbols used for human genes (in italics, capitals) and approved names (<http://www.genenames.org/>) should be used for genes in farm and domestic animals. Sequence variants in DNA and protein sequences (mutations, polymorphisms) should be described following the Recommendations for the description of sequence variants (<http://www.hgvs.org/mutnomen/recs.html>). The first three letters (only) in the symbol for a restriction endonuclease should be italicised (e.g. *EcoRI*, *BamHI*, *HindIII*, *Sau3AI*). Similarly, Taq as in *Taq* DNA polymerase should be italicised. All sequence data described in the paper should be submitted to the public sequence databases (GenBank/EMBL/DDBJ) and the appropriate accession numbers cited. It may be worth checking the relevant genome databases (e.g. <http://www.ensembl.org/>) for near contemporary summaries of information on the species, chromosome(s) or gene(s) described in the manuscript.

Abbreviations should not be used in the title, keywords, or to begin sentences, except when they are widely known throughout science (e.g., DNA, RNA) or are terms better known by their abbreviation (e.g., IgG). Abbreviations may be used in heads within the paper if they have been first defined within the text. Generally, abbreviations are allowed when they help the flow of the manuscript. Spell out the term in full of the abbreviation following in parentheses the first time it is mentioned in the main text and use the abbreviation consistently thereafter. Plural forms of abbreviations do not require “s”. The abstract, text, each table, and each figure must be understood independently of each other. Therefore, abbreviations shall be defined within each of these parts of the manuscript.

Units. The SI International System of measurement units should only be used. The definitive SI website is that of the *Bureau International des Poids et Mesures* at <http://www.bipm.org/>. This document lists some most frequent units used in animal science studies. Use mg/l instead of mg·l⁻¹. Units must be indicated on each occurrence of numerical information and at the axes of all graphs. To express a unit of measurement, use a space between the number and the unit (5 g; 3 °C) except for percentages (37%). In a series of measurements, indicate the unit at the end (3, 6, and 8 mm). Abbreviate units only after a numeric value (24 h; several hours later).

Numbers. The decimal marker is a point (e.g., 0.1 m), while the thousand’s separator is a space on either side of the decimal period (e.g., 25 562.987 05). The decimal point in all numbers between 1 and –1, except 0, must be preceded by 0 (e.g., 0.26). In general, use words for numbers one through nine, and use digits for 10 and over. For a series of numbers, any of which are over 10, use all digits. Don’t use the MathType or MS Word Equations editor for symbols or variables written in the running article text (use the Symbol letters). Insert spaces around all

signs (except slant lines) of operation (=, −, +, ×, >, or <) when these signs occur between two items.

Currency. Currency codes based on the ISO 4217 Currency Code norm should be used. When a monetary unit is referred to generally, but an amount is not included, it is spelt out in letters, except in tables (e.g. an amount in euros). In the text, use: EUR 30; EUR 30 per year per ha; EUR 10 million. In tables in case of the main unit for a column (table), use: (EUR); (million EUR).

Statistics. Describe statistical methods with enough detail to enable a knowledgeable reader to verify the reported results. Give details of randomisation and blocking, as well as the number of replications, blocks, or observations. Clearly distinguish between true replications and subsamples within a replication/treatment combination. Always specify the experimental design and indicate whether the design was balanced. When means (or medians) are followed by $\pm x$, indicate whether x refers to the standard deviation, standard error, or half the confidence interval; error bars should similarly be defined. Except for simple procedures (e.g., t-tests, one-way analysis of variance, simple linear regression), cite an appropriate and accessible statistical text and indicate the version of the SW used (Name, Version; Company, Country). In general, statistical techniques should be described in the Material and Methods section. The level of significance should be normally indicated by using the following conventional standard abbreviations for significance ($P < 0.05$, $P < 0.01$, and $P < 0.001$). In tables, levels of significance should be indicated by *, **, and ***, respectively. Statistical significance $P = 0.03$ can also be used in the text or tables.

Supplementary Material. Authors can include original, so far unpublished supplementary material (SM), which may comprise additional tables, data sets, figures, and other non-essential files. SM will appear only in the AE electronic version (ESM – electronic supplementary material). ESM will be published as submitted and will not be corrected or checked for scientific content, typographical errors or functionality. ESM must be relevant to the parent manuscript, but the manuscript must stand alone without ESM for those readers who will be reading the hard copy only. It should be submitted along with the main manuscript in a separate file. ESM should be identified and mentioned in the main text as Supplementary Table S1, Supplementary Table S2, etc. for tables or Supplementary Figure S1, Supplementary Figure S2, etc. for figures or Supplementary Material S1, Supplementary Material S2, etc. for other material. SM should be submitted with the captions and source. Individual file sizes should be restricted to 10 Mb maximum (zipped or unzipped).

6) MANUSCRIPT PARTS (Original paper)

Title should be short and informative; subtitles, commonly unknown abbreviations or acronyms, and numbering of serial articles (Part I, Part II, etc.) should be avoided.

Authors' names, ORCID and affiliation (department and faculty, institution, country).

Correspondence to: Corresponding author name, affiliation, and email.

Abstract is a summary of the scientific paper, including an outline of the background, objectives, methods, results and conclusions, and implications of the paper (not exceeding 250 words). It should describe all the essential facts of the paper and basic numerical data, including any statistical evaluation, which should be incorporated. Being published in world databases, the abstract is a significant part of the paper, and it is therefore recommended that it be precise. Abbreviations in the abstract can be used only when explained. The abstract should highlight the original contribution of the article, in terms of either an innovation in method or empirical findings that are likely to be of broad interest to the Journal's international readership. The use of jargon should be kept to a minimum.

Keywords are words most aptly describing the studied problem. Three to six keywords not overlapping with those used in the manuscript title and abstract are recommended. Write them in singular, in lower case letters and separate them using semicolons.

The traditional **introduction** of a scientific paper utilises a concise, funnel-shaped structure (typically comprising 10–15% of the total manuscript) to transition readers from broad, established knowledge to a specific research question/the hypotheses to be tested. It is usually organised into four key components: establishing the general context and background of the field, identifying a specific need or gap in current literature, and proposing the study's task or objective as the solution to that gap. Last, it provides a roadmap of the object by outlining the main results and explicitly mentioning the originality of the study. Ultimately, a successful introduction stays highly focused, avoiding exhaustive histories by only citing the literature necessary to establish the rationale. The introduction should provide information on the present state of research in the field concerned, supported by selected references to literary sources.

Materials and Methods describe in detail all preliminary material, experiments conducted, their extent, conditions and course. The whole methodology is only to be described if it is an original one; in other cases, it is sufficient to cite the author of the method and to mention any differences.

In animal studies, the breed, age, sex, number of animals, health state and feeding regimen should be given along with the statement of the institutional Ethics Committee. Animals must be treated in accordance with animal care and use regulations of the respective country, and any unnecessary suffering and pain must be prevented. Methods of anaesthesia or euthanasia must be reported. All experimental animals should be used in compliance with the national laws and regulations of the research institutions of the authors. Good laboratory practice (see, for example, <https://1url.cz/A157G>) and ethical rules must be followed. Specify the mentioned products used for the experiments by giving their exact name/type, name of the producer, and country of the producer's headquarters in parentheses. Trademarked or registered names should be capitalised.

When the research contained in a paper involves the use of human subjects, the author must clearly communicate to the editors in a declaration that all necessary ethical approval procedures have been implemented and satisfied. If the research involves some form of deception, authors should also provide a statement clearly explaining the need and the extent of the deception involved. If the extent of the deception is deemed beyond that considered

appropriate, the paper will be returned even if all ethical approvals have been granted by the author's research organisation. In line with other journals, including overt deception to generate data, will be returned upon submission.

All original procedures that were used for the processing of experimental material and all analytical methods used for evaluation should also be detailed. The whole methodology is only to be described if it is an original one, in other cases, it is sufficient to cite the author of the method and to mention any differences. Data verifying the quality of acquired data should be indicated for the used methods. Methods of statistical processing, including the software used should also be listed in this section. The methods and models of statistical analysis must be indicated and sufficient statistical details given to allow replication of the experiment.

If an author uses Artificial Intelligence Generated Content (AIGC) tools such as ChatGPT in the preparation of any part of a paper, its use must be described, transparently and in detail, to the editors in the Artificial Intelligence statement included in the title page as part of the original submission. The final decision about whether use of an AIGC tool is appropriate or permissible in the circumstances of a submitted manuscript will be made by the editors.

The ATS expects data sharing. Authors are required to provide a data availability statement describing the availability or the absence of shared data. When data have been shared, authors are required to include in their data availability statement a link to the repository they have used, and to cite the data they have shared in their paper. If sharing data compromises ethical standards or legal requirements, then authors are not expected to share it. Note that other artefacts of the research process such as the software code used to generate results, should be uploaded as Supplementary Material for Review. Papers based on experiments are also required to submit questionnaires, protocols and procedures. In cases where authors are unable to comply with this policy (e.g. because of the use of proprietary data or where individuals can be identified from the data), authors are required to explain to the editors the precise reasons. In such cases, authors are required to provide information about how the data can be accessed (e.g. from the owner of the data) to allow replication by a third party who obtains access to the data. The editors reserve the right to deny publication where the data and code are not provided or where insufficient justification has been given for not making them available.

Results and Discussion. Results obtained from the experiments, including their statistical evaluation and commentary, should be presented graphically or in table form. The author should comment on the results and confront them with data published elsewhere.

Acknowledgements. An Acknowledgements section should be included at the end of the manuscript, immediately preceding the references. This section must be used to recognise individuals who provided substantive assistance with the research, data collection, or manuscript preparation but whose contributions do not meet the formal criteria for authorship. Authors must ensure they have obtained written permission from any individuals named in this section. All sources of financial support for the project must be explicitly declared here. Funding acknowledgements should state the full name of the funding agency followed by the specific grant or project number in parentheses. If the research received no external funding, please

include an explicit statement noting that the work was self-funded or supported by the authors' institution.

Conflict of interest. Authors must use this section to disclose any potential conflicts of interest, financial involvements, or relationships that could be perceived as influencing the objectivity of the research. If no conflicts exist, please state that the authors declare no competing interests.

Ethical compliance. Authors must include a dedicated "Ethical Compliance" section before the references, outlining the relevant permissions and consents obtained for their study. If a study involves multiple categories of ethical approval, separate subheadings may be used within this section to maintain clarity. For research involving human participants, authors must explicitly state that the study was reviewed and approved by an institutional review board or independent ethics committee, providing the specific name of the approving body and the corresponding protocol or approval number. Furthermore, a statement must be included confirming that informed consent was obtained from all individual participants involved in the study or explaining why an ethics committee waived this requirement. If the study involves minors or legally incapacitated individuals, authors must confirm that informed consent was obtained from parents or legal guardians. For studies involving animals, authors must state compliance with all relevant institutional, national, or international guidelines for the care and use of laboratory animals. The manuscript must explicitly name the committee that approved the experimental protocols and provide the relevant authorisation numbers. If the research did not involve human participants or animals, authors must explicitly include a brief statement confirming that no ethical approvals were required for the work. Failure to provide verifiable ethical documentation upon request may result in the immediate rejection of the manuscript or the retraction of published work.

References

All References should follow the ATS house style and citation principles. The authors are responsible for the accuracy of their references. The authors are recommended to prefer references to papers from peer-reviewed periodicals (from recent articles published in indexed journals in the Web of Science or Scopus database, except for older core articles in the field and key methodological contributions) and limit citations from non-available sources (reports, national journals, proceedings, theses, etc.) and a maximum of two self-citations (except Review articles). Always include the DOI if it exists. All sources included in the References section must be cited in the paper and vice versa.

Source material must be included in the body of the article, with citations to the author(s) and date(s) of the sources. In-text citations – the papers published by one or two authors are to be cited by their names, those published by three or more authors by the name of the first one et al. (but all authors' names should be listed in the reference list). The name(s) of the author(s) and year of publication are to be cited by including them in the text directly, e.g., ... as published by Novak (2024); Novak and Konecny (2025), Smith et al. (2023) or indirectly, citing name(s) and year of publication in parentheses (Smith et al., 2006; Pavlik, 2007; Pavlik and Konecny, 2009). Several papers cited together should be arranged according to the year of publication, starting with the oldest one, divided by semicolons (Pavlik, 1997; Konecny, 2000; Pavlik-

Konecny, 2021a; Pavlik-Konecny, 2021b; Konecny et al., 2022; Bond et al., 2025). Work that has not been accepted for publication, the author's own unpublished data or personal communications should also be included in the Reference section. All authors' names must be given in English transcription without national-specific letters, without diacritical signs of national Latin-based alphabets. Names in non-Latin alphabets should be transcribed according to international standards. The manuscript must be carefully checked to ensure that authors' names and publication years are the same in the text as in the reference list. The citations should be limited to items really needed for placing the paper into a proper context.

The list of references should be arranged alphabetically by authors' names, and chronologically per author. If more than one paper by the same author(s) published in the same year is cited, the papers should be differentiated by AUTHOR YEAR_a; AUTHOR YEAR_b etc. both in the text and the reference list. The accuracy of spelling and completeness of cited names (e.g. Hackner SG, not Hackner S) should be checked in the Web of Science or PubMed databases. Literary sources should be cited in English. If English is not the original language, the original language should be mentioned at the end of the citation (e.g.: in Czech).

Examples of reference format:

- **Journal article found online (doi should be provided if available):**

Author A.A. (Publication Year): Article title. Periodical Title, Volume(Issue), pp.-pp.
doi:XX.XXXXX or Retrieved from journal URL

Jameson J. (2013): Analysis of cocoa (*Theobroma cacao*) production in Africa: The Nigerian experience. *Journal of Tropical Agriculture* 44: 889–915.

- **Journal article in print:**

Author A.A. (Publication Year): Article title. Periodical Title, Volume, p.–p.

Novak A. (2005): The animal breeding and sustainable agriculture. *The Journal of Sustainable Agriculture* 13: 147–148.

- **Book in print:**

Author A.A. (2012): Title of Work. Publisher City, Publisher.

Thomas J. (1999): *Food Production in Tropical Areas*. New York, NY, Simon and Schuster.

Strige W., Davidson E.B. (2002): *Crop Production and Food Security*. (3rd ed.). New York, Macmillan.

- **Book in print, more than six authors:**

Davis M. et al. (1979): *Crop Production in Africa*. (2nd ed.). New York, Macmillan.

- **An e-book from an e-reader:**

Author A.A. (Year of Publication): Title of Work [E-Reader Version]. Retrieved from <http://xxxx> or doi:xxxx

Eggers D. (2008): The Circle [Kindle Version]. Retrieved from <http://www.amazon.com/>

- **Book chapter in an edited book:**

Mettam G.R., Adams L.B. (1994): How to prepare an electronic version of your article. In B.S. Jones, R.Z. Smith (Eds): Introduction to the electronic age (pp. 281–304). New York, E-Publishing Inc.

- **Citing a book found in a database:**

Author A.A. (Year of Publication): Title of Work. Retrieved from <http://xxxx> or [doi:xxxx](https://doi.org/xxxx)

Sayre R.K., Devercelli A.E., Neuman. M.J., Wodon Q. (2015): Investment in early childhood development: Review of the World Bank’s recent experience. doi: 10.1596/978-1-4648-0403-8

- **Conference papers/proceedings:**

Author A.A. (Publication Year): Conference paper title. In Editor First Initial. Editor Surname (Ed.), Proceedings Book Title (pp. page range of paper). Place of Publication: Publisher.

Armstrong D.B., Fogarty G.J., Jonathan D. (2007): Scales measuring characteristics of small business information systems. In W-G. Tan (Ed.): Proceedings of Research, Relevance and Rigour: Coming of age: 18th Australasian Conference on Information Systems (pp. 163–171). Toowoomba, Australia: University of Southern Queensland.

- **Magazine article in print:**

Author A.A. (Year, month of Publication): Article title. Magazine Title, Volume(Issue), pp.–pp.

Tumulty K. (2006, April): Should they stay or should they go? Time 167(15): 3–40.

- **Magazine article found online:**

Author A.A. (Year, Month of Publication): Article title. Magazine Title, Volume(Issue). Retrieved from <http://xxxx>

Tumulty K. (2006, April): Should they stay or should they go? Time, 167(15) Retrieved from <http://ti.me/2oYxSOY>

- **A newspaper article in print:**

Author A.A. (Year, Month Date of Publication): Article title. Magazine Title, pp. xx-xx.

Thomas S. (2004, March 31). Coffee production and trade. The New York Times, p. D5.

- **A newspaper article found online:**

Author A.A. (Year, Month Date of Publication): Article title. Newspaper Title, Retrieved from newspaper homepage URL

Rosenberg G. (1997, March 31): Electronic discovery proves an effective legal weapon. The New York Times, Retrieved from <http://nyti.ms/IL5QBs>

- **Websites:**

Author's Last name F.M. (Year published): Title of article or page. Retrieved from URL

Pevta C. (2017).: Facing the robotic revolution. Retrieved from <http://www.bbc.com/news/technology-39028030>

- **Website with no author or date of publication:**

Census data revisited. (n.d.). Retrieved March 9, 2009, from Harvard, Psychology of Population website, <http://harvard.edu/data/index.php>

7) **PROOF-SHEETS**

The corresponding author will receive the author proofs via email as a PDF. It is the authors' sole responsibility to proofread this document carefully against the original typed manuscript. At this stage, adjustments are strictly limited to correcting errors introduced during the printing phase; no factual changes can be made to the manuscript once it has been accepted for publication. To indicate necessary corrections or add notes, authors should use the comments feature in Adobe Acrobat, rather than attempting to directly edit the PDF's content. The corrected proof sheets must be returned within 48 hours.

8) SELECTED UNITS AND TERMS

calorie (gram) ... cal	metric tonne ... t
celsius (with number) ... °C	micro ... μ (prefix)
centimetre ... cm	microgram ... μg
centimetre, square ... cm^2	microkat ... μkat
cubic centimetre ... cm^3	microlitre ... μl
cubic millimetre ... mm^3	milli ... m (prefix)
gram ... g	millilitre ... ml
gravity ... g	millimolar (concentration) mM (= mmol/l)
hectare ... ha	millimole (mass) ... mmol
hour(s) ... h	minute(s) ... min
international unit ... IU	molar (concentration) ... M
intramuscularly ... i.m.	molar (mass) ... mol
intraperitoneally ... i.p.	mole (number, mass) ... mol
intravenously ... i.v.	nano ... n (prefix)
joule ... J	nanogram ... ng
katal ... kat	probability ... P
kilo ... k (prefix)	second ... s
kilobase ... kb	species ... sp.
kilobyte ... KB	subcutaneous ... s.c.
kilocalorie ... kcal	subspecies ... ssp.
kilo Dalton ... kDa	volume ... vol
kilogram ... kg	volume/volume vol/vol (use parenthetically)
litre ... l	weight/volume wt/vol (use parenthetically)
logarithm (natural) ... ln	
logarithm (base 10) ... log ₁₀	
mega ... M (prefix)	
metre ... m	

9) TABLE AND FIGURE EXAMPLES

Table 3: Distribution showing accessibility of respondents towards Primary Health Care

	Percentage			Ranking	
	NE	ME	VE	Mean	Sd
Distance between PHC center and current residence	8.30	8.30	83.30	2.75	0.60
The road network (how it links with another major route)	10.00	54.20	35.80	2.26	0.63
The road type (Tarred/Untarred)	20.00	37.50	42.50	2.23	0.76
Current state of the road (Potholes, degradation)	17.50	39.20	43.30	2.26	0.74
Preference to children, pregnant/nursing mothers, elders and disabled	8.30	44.20	47.50	2.39	0.64
Number of medical supplies in the PHC center	6.70	48.30	45.00	2.38	0.61
Days/Hours of full functional operation	10.80	33.30	55.80	2.45	0.68
Number of medical personnel	15.00	46.70	38.30	2.23	0.70
State of security within the locality	15.80	45.80	38.30	2.23	0.70
Cultural diversity	12.50	42.50	45.00	2.33	0.69

Note: NE = Not Easy, ME = Moderately Easy, VE = Very Easy

Source: Authors' analysis from field survey (2023)

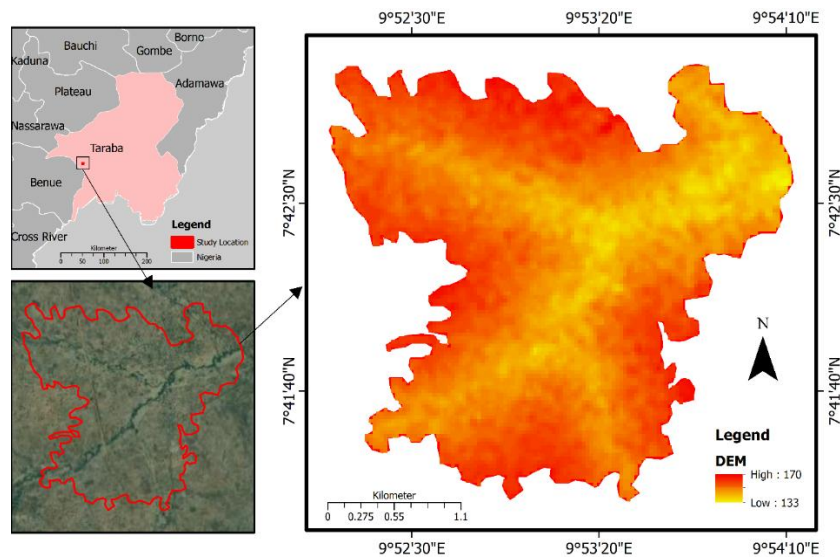


Figure 2: Location and digital elevation model (DEM) of the study area.

Source: Shuttle Radar Topography Mission (SRTM 30 m DEM, United States Geological Survey [USGS], 2024) and authors' GPS-based field boundary delineation (2025). Authors' GIS processing (2025) based on Shuttle Radar Topography Mission (SRTM 30 m Digital Elevation Model) data obtained from the USGS Earth Explorer, combined with administrative boundary data from GADM database of Global Administrative Areas (2024) and base map imagery from Esri World Imagery.

10) SELF ASSESSMENT

1. Self-assessment questions to be answered by the authors before submission of the manuscript:

2. Is the information to be published new and thus worthy of publication?
3. Is novelty expressed in the title and discussed properly in the discussion?
4. Is the hypothesis sound and original?
5. Were the experiments well-designed and did appropriate methods used?
6. Is the paper written with essential clarity?
7. Has the English been validated by a native speaker knowledgeable about the field?
8. Is the list of references comprehensive, and are all the references relevant?
9. Where appropriate, are the results statistically significant?
10. Are the titles and legends for tables and figures complete and self-explanatory?
11. Were the Instructions for Authors thoroughly followed?

Please do not submit the manuscript if any of the above questions have been answered in the negative.

Compliance with these instructions is obligatory for all authors. If a manuscript does not comply with the above requirements, the editorial office will not accept it for consideration and will return it to the authors without reviewing.

Revised: XXXX